



Beaufort County
Public Works
Stormwater Infrastructure
Project Summary

Project Summary: Marsh Drive

Activity: Routine/Preventive Maintenance

Narrative Description of Project:

Duration: 2/27/17 - 3/1/17

Project improved 154 L.F. of drainage system. Grubbed and cleared 75 L.F. of workshelf. Cleaned out (1) catch basin and 154 L.F. of channel. Jetted 154 L.F. of channel pipe. Hydroseeded for erosion control.

2017-535 / Marsh Drive	Labor Hours	Labor Cost	Equipment Cost	Material Cost	Contractor Cost	Indirect Labor	Total Cost
AUDIT / Audit Project	0.5	\$11.75	\$0.00	\$0.00	\$0.00	\$6.62	\$18.36
CBCO / Catch basin - clean out	12.0	\$267.36	\$52.08	\$15.00	\$0.00	\$172.08	\$506.52
CCO / Channel - cleaned out	70.0	\$1,667.64	\$325.62	\$171.24	\$0.00	\$988.02	\$3,152.52
HAUL / Hauling	21.0	\$467.67	\$197.82	\$352.59	\$0.00	\$302.82	\$1,320.90
PRRECON / Project Reconnaissance	4.0	\$90.08	\$7.20	\$7.92	\$0.00	\$53.34	\$158.54
2017-535 / Marsh Drive	107.5	\$2,504.50	\$582.72	\$546.75	\$0.00	\$1,522.87	\$5,156.84
Sub Total							
Grand Total	107.5	\$2,504.50	\$582.72	\$546.75	\$0.00	\$1,522.87	\$5,156.84

Before

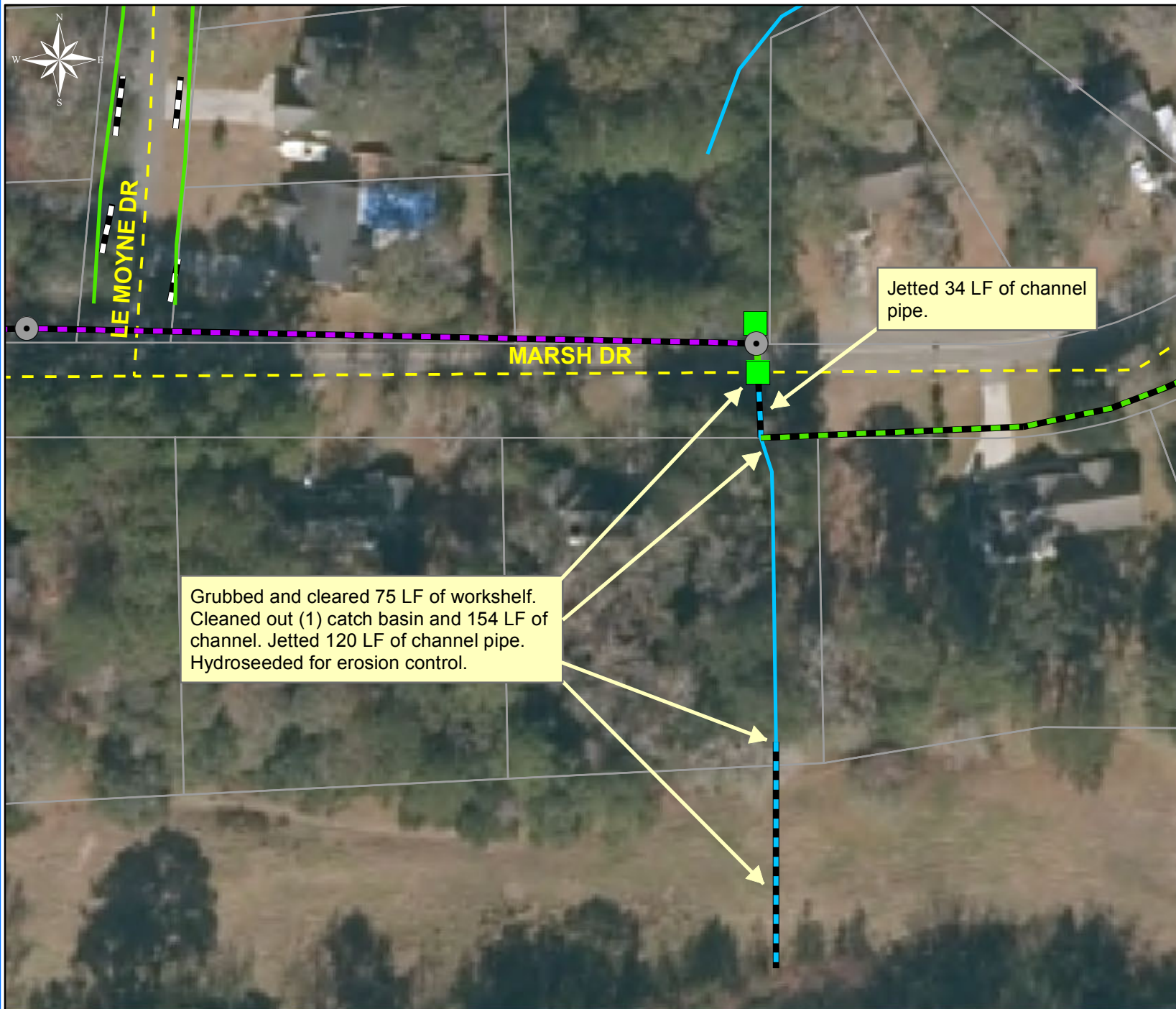


During



After





Project: Marsh Drive

Activity: Routine/
Preventive
Maintenance

Project #:
2017-535

Township/SW Dist:
Ladys Island/7

Completed:
March 2017

Legend

Drainage Type

- Access Pipe
- Bleeder Pipe
- Channel Pipe
- Channel
- Stream
- Crossline Pipe
- Driveway Pipe
- Lateral
- Lateral Pipe
- River
- Road Pipe
- Roadside
- Roadside Pipe

Grubbed and cleared 75 LF of workshelf.
Cleaned out (1) catch basin and 154 LF of
channel. Jetted 120 LF of channel pipe.
Hydroseeded for erosion control.

Jetted 34 LF of channel
pipe.

0 15 30 60 90 120
Feet

1 inch = 73 feet

Prepared By: BC Stormwater Management Utility
Date Print: 04/17/17
File:C:\project summaries map\Marsh Drive_2017-535